

The Bee's Day Out

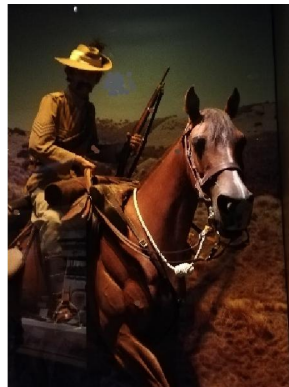
1 April 2023

John Edwards's 'The Bee's Day Out' tour named after the registration plate on his 'B', saw a selection of 9 cars depart Manfeild in Feilding on an overcast morning for the Central Plateau. Wow what a great bunch, John and Chris, Robert and Glenn, Ken and Suyee, Ian and Jason, Alan and Robyn, Neil and Liz, Robyn and Steve, Chris, John and Anne. At this stage, two cars had their hood down braving the elements.

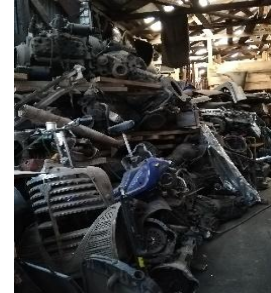
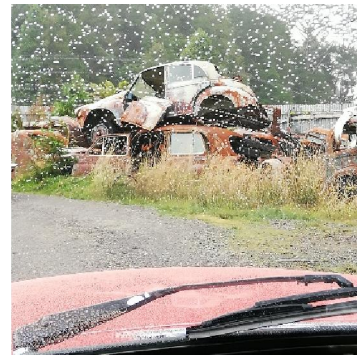
From Feilding we travelled through Halcombe, with a MG toot to Sam at the Rusty Radiator on the way past. We drove through the metropolis of Marton and along Broadway, its main street, before returning to State Highway 1 for the trip north. A short stop in Hunterville for a BYO cuppa and a chat. Whilst there we met up with members of our Whanganui group who were travelling the back roads to Kimbolton to attend the 'Sculpture Festival'. Next stop Taihape for a comfort stop. From Taihape it was off to Waiouru to the Army Museum. The trip from Taihape turned a tad cold with rain threatening so the hoods went up upon arrival. It was at this stop that we were joined by John Eames and Ian.



John Edwards, our run director, had arranged a light lunch for us at the museum followed by a presentation and self-guided tour of the museum. The museum is packed with army memorabilia, military exhibits, and research material, well worth a visit, we were there roughly 2 hours.



John's original 'Bee's Day Out' was to travel up the east coast via Highway 50 and over 'Gentle Annie' back to Taihape but Cyclone Gabrielle put paid to that as the roads were barely passable and such a trip considered inappropriate. So, the run to the Central Plateau was substituted and originally planned for the previous weekend. However, water reticulation issues in Waiouru meant the museum would not be open so John made further alterations to his run. As a consequence, we were directed to Ohakune, with time for a stop for chocolate éclairs from the famous chocolate éclair shop, and on to 'Smash Palace' in Horopito where we enjoyed a drive through the yard and a tour of the various buildings. It would appear, that no matter the car, there would be at least one part held in stock for it.



By this time, it was after 3 pm and our run was scheduled to go down the 'Paraparas' to Whanganui and home but with the weather closing in and heavy rain closer to Whanganui a group decision had us heading home the way we came.

John's run ended at the old Denbigh Hotel in Feilding with a debrief over refreshments and for some, an evening meal.

Thank you, John, for all the work in arranging this run, given the circumstances around the route and timing, a great day out was enjoyed by all.

Of a matter of interest – we crossed or drove under the Main Trunk Railway Line 22 times during the day.

Robyn and Steve